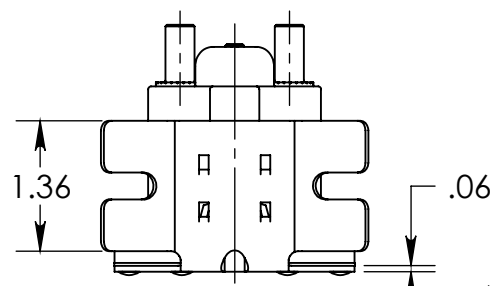
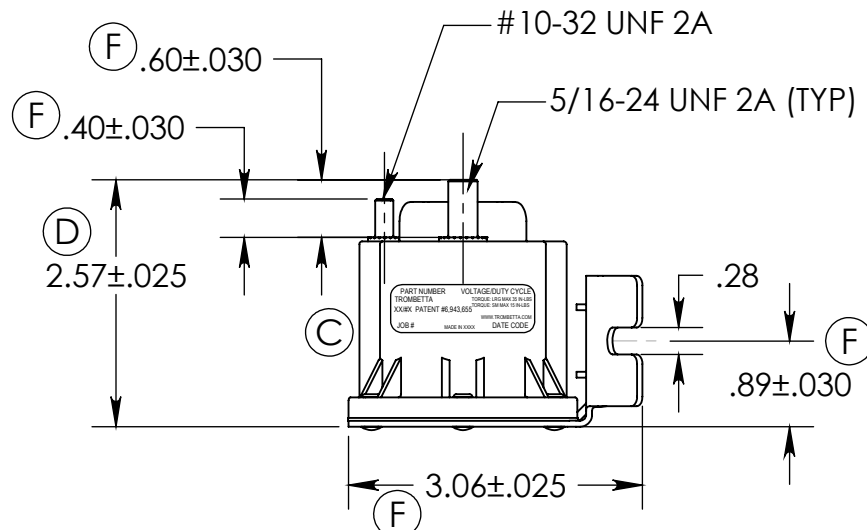
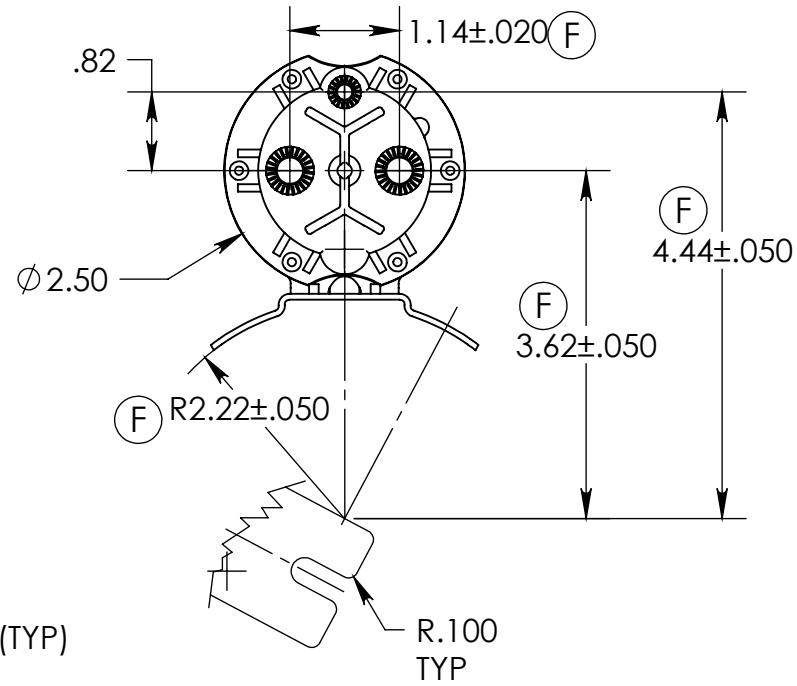


THIS DRAWING IS PROPRIETARY AND CONFIDENTIAL PROPERTY OF TROMBETTA AND IS LOANED IN CONFIDENCE WITH THE UNDERSTANDING THAT IT WILL BE KEPT CONFIDENTIAL AND USED ONLY FOR THE PURPOSE FOR WHICH IT IS LOANED.




NOTE:
(E) ASSEMBLY IS ROHS COMPLIANT

F	ADDED ±.050 TOLERANCE TO 3.62, 4.44 & R2.22 ADDED ±.030 TOLERANCE TO .89, .040 & .060, ADDED .020 TO 1.14, ADDED .025 TO 3.06, REMOVED 28° TYP., R.10, .15 & .38.	CAG	6158	1/8/10	DAH
E	ADDED ROHS NOTE	CAG	6078	7/23/09	DAH
D	ADDED TOLERANCE TO HEIGHT DIMENSION	CAG	4771	10/25/06	DAH
C	ADDED PATENT # TO LABEL	CAG	4642	10/18/05	DAH
REV.	DESCRIPTION	BY	ECN	DATE	APP.

MATERIAL

FINISH

UNLESS OTHERWISE SPECIFIED
.XXX +/- .005 .XX +/- .01 ANG. +/- 1°
BREAK ALL EDGES .005-.015 125 FINISH
FILLET'S .010-.020 RAD.

Trombetta 
MOTION TECHNOLOGIES

634-XX11 SERIES
DIMENSIONAL ASSEMBLY

DRAWN	TM	SCALE: 1:2	DWG. NO.
APPR.	TM	DATE 3/10/04	E08393